

RESOLUTION NO. 2407**A RESOLUTION OF THE CITY COUNCIL OF THE CITY OF SOLEDAD
APPROVING MODIFICATION OF A PREVIOUSLY APPROVED
SUBDIVISION DESIGN FOR ANDALUCIA IV**

WHEREAS, the City Council and the Planning Commission of the City of Soledad previously approved the Andalucia IV Subdivision; and,

WHEREAS, the City approvals include rezoning, annexation, vesting tentative map approval and certification of a supplemental Environmental Impact Report; and,

WHEREAS, the Vesting Tentative Map approved the creation of 212 residential lots and a four acre park site; and

WHEREAS, the applicant has submitted two alternative maps, marked, "Exhibit A" and "Exhibit B", as noted in the City Planning Director's staff report of January 23, 1995; and,

WHEREAS, "Exhibit A" contains 244 lots and reconfigures the street alignment to be vertical as opposed to horizontal in the previous map; and,

WHEREAS, "Exhibit B" shows Prado Drive as a through street and contains 239 residential lots as required by the previous approval; and,

WHEREAS, the proposed alternatives meet the Conditions of Approval with the exception of the condition requiring Prado (Andalucia) as a through street; and,

WHEREAS, the Soledad Planning Commission held a public hearing duly noticed pursuant to State and local codes, on January 23, 1995; and

WHEREAS, the Soledad Planning Commission has recommended approval of the proposed subdivision map modifications; and,

WHEREAS, as the City Council of the City of Soledad had held a public hearing duly noticed pursuant to State and local codes, on January 23, 1995

THEREFORE, BE IT RESOLVED, that the City Council approves the Planning Commission's recommendation to approve the Andalucia IV Tentative Map modification as shown on "Exhibit A."

PASSED AND ADOPTED by the City Council of the City of Soledad at a regular meeting duly held on the 23rd day of January, 1995, by the following vote:

AYES, and in favor thereof, Councilmembers: John Holguin, Fred Ledesma, Richard Ortiz, Mayor Ben Jimenez, Jr.

NAYES, Councilmembers. Mayor Pro Tem Fabian Barrera

ABSENT, Councilmembers: None

Ben Jimenez Jr.
MAYOR OF THE CITY OF SOLEDAD

ATTEST.

Ble
CITY CLERK OF THE CITY OF SOLEDAD

ALTERNATE B

EXHIBIT "A"

APPROVED FOR: **KUTYRAN & DRAY**
ANDALUCIA No 4
 CITY OF SOLEDAD, MONTEREY COUNTY CA.

SECTOR ENGINEERS, INC.
 CIVIL ENGINEERING
 5001 RIVER LANE
 SAN JOSE, CALIFORNIA 95128

DATE: 11/10/04
 SHEET: 1 OF 1
 SCALE: 1" = 40'

ALTERNATE VESTING TENTATIVE MAP ANDALUCIA NO. 4 SUBDIVISION FOR KUTYRAN & DRAY

GENERAL AND PROVISIONS

1. THIS MAP IS MADE IN ACCORDANCE WITH THE SUBDIVISION MAP ACT, CHAPTER 349, CIVIL CODE, CALIFORNIA, AND THE SUBDIVISION MAP ACT, CHAPTER 349, CIVIL CODE, CALIFORNIA, AND THE SUBDIVISION MAP ACT, CHAPTER 349, CIVIL CODE, CALIFORNIA.

2. THE MAP IS MADE IN ACCORDANCE WITH THE SUBDIVISION MAP ACT, CHAPTER 349, CIVIL CODE, CALIFORNIA, AND THE SUBDIVISION MAP ACT, CHAPTER 349, CIVIL CODE, CALIFORNIA, AND THE SUBDIVISION MAP ACT, CHAPTER 349, CIVIL CODE, CALIFORNIA.

3. THE MAP IS MADE IN ACCORDANCE WITH THE SUBDIVISION MAP ACT, CHAPTER 349, CIVIL CODE, CALIFORNIA, AND THE SUBDIVISION MAP ACT, CHAPTER 349, CIVIL CODE, CALIFORNIA, AND THE SUBDIVISION MAP ACT, CHAPTER 349, CIVIL CODE, CALIFORNIA.

4. THE MAP IS MADE IN ACCORDANCE WITH THE SUBDIVISION MAP ACT, CHAPTER 349, CIVIL CODE, CALIFORNIA, AND THE SUBDIVISION MAP ACT, CHAPTER 349, CIVIL CODE, CALIFORNIA, AND THE SUBDIVISION MAP ACT, CHAPTER 349, CIVIL CODE, CALIFORNIA.

5. THE MAP IS MADE IN ACCORDANCE WITH THE SUBDIVISION MAP ACT, CHAPTER 349, CIVIL CODE, CALIFORNIA, AND THE SUBDIVISION MAP ACT, CHAPTER 349, CIVIL CODE, CALIFORNIA, AND THE SUBDIVISION MAP ACT, CHAPTER 349, CIVIL CODE, CALIFORNIA.

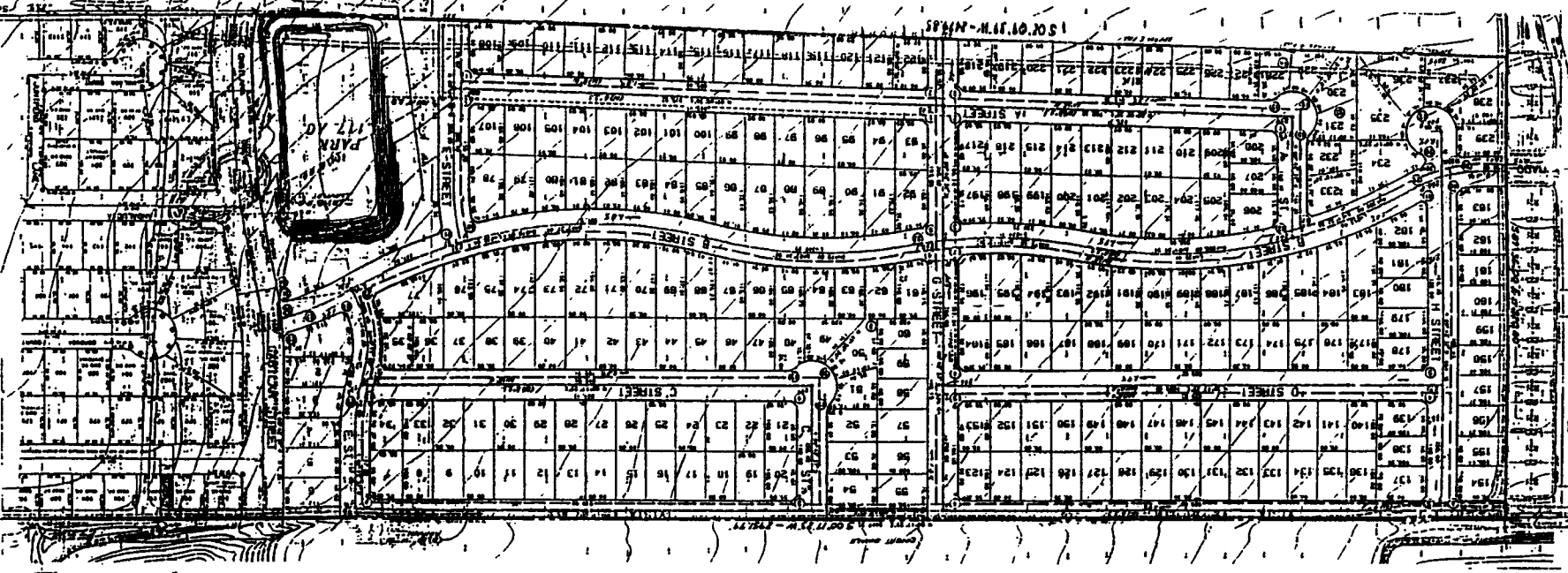
6. THE MAP IS MADE IN ACCORDANCE WITH THE SUBDIVISION MAP ACT, CHAPTER 349, CIVIL CODE, CALIFORNIA, AND THE SUBDIVISION MAP ACT, CHAPTER 349, CIVIL CODE, CALIFORNIA, AND THE SUBDIVISION MAP ACT, CHAPTER 349, CIVIL CODE, CALIFORNIA.

7. THE MAP IS MADE IN ACCORDANCE WITH THE SUBDIVISION MAP ACT, CHAPTER 349, CIVIL CODE, CALIFORNIA, AND THE SUBDIVISION MAP ACT, CHAPTER 349, CIVIL CODE, CALIFORNIA, AND THE SUBDIVISION MAP ACT, CHAPTER 349, CIVIL CODE, CALIFORNIA.

8. THE MAP IS MADE IN ACCORDANCE WITH THE SUBDIVISION MAP ACT, CHAPTER 349, CIVIL CODE, CALIFORNIA, AND THE SUBDIVISION MAP ACT, CHAPTER 349, CIVIL CODE, CALIFORNIA, AND THE SUBDIVISION MAP ACT, CHAPTER 349, CIVIL CODE, CALIFORNIA.

9. THE MAP IS MADE IN ACCORDANCE WITH THE SUBDIVISION MAP ACT, CHAPTER 349, CIVIL CODE, CALIFORNIA, AND THE SUBDIVISION MAP ACT, CHAPTER 349, CIVIL CODE, CALIFORNIA, AND THE SUBDIVISION MAP ACT, CHAPTER 349, CIVIL CODE, CALIFORNIA.

10. THE MAP IS MADE IN ACCORDANCE WITH THE SUBDIVISION MAP ACT, CHAPTER 349, CIVIL CODE, CALIFORNIA, AND THE SUBDIVISION MAP ACT, CHAPTER 349, CIVIL CODE, CALIFORNIA, AND THE SUBDIVISION MAP ACT, CHAPTER 349, CIVIL CODE, CALIFORNIA.



LOT	AREA (SQ. FT.)	AREA (SQ. METERS)	PERCENTAGE OF TOTAL AREA
1	11.00	1.01	0.01
2	11.00	1.01	0.01
3	11.00	1.01	0.01
4	11.00	1.01	0.01
5	11.00	1.01	0.01
6	11.00	1.01	0.01
7	11.00	1.01	0.01
8	11.00	1.01	0.01
9	11.00	1.01	0.01
10	11.00	1.01	0.01
11	11.00	1.01	0.01
12	11.00	1.01	0.01
13	11.00	1.01	0.01
14	11.00	1.01	0.01
15	11.00	1.01	0.01
16	11.00	1.01	0.01
17	11.00	1.01	0.01
18	11.00	1.01	0.01
19	11.00	1.01	0.01
20	11.00	1.01	0.01
21	11.00	1.01	0.01
22	11.00	1.01	0.01
23	11.00	1.01	0.01
24	11.00	1.01	0.01
25	11.00	1.01	0.01
26	11.00	1.01	0.01
27	11.00	1.01	0.01
28	11.00	1.01	0.01
29	11.00	1.01	0.01
30	11.00	1.01	0.01
31	11.00	1.01	0.01
32	11.00	1.01	0.01
33	11.00	1.01	0.01
34	11.00	1.01	0.01
35	11.00	1.01	0.01
36	11.00	1.01	0.01
37	11.00	1.01	0.01
38	11.00	1.01	0.01
39	11.00	1.01	0.01
40	11.00	1.01	0.01
41	11.00	1.01	0.01
42	11.00	1.01	0.01
43	11.00	1.01	0.01
44	11.00	1.01	0.01
45	11.00	1.01	0.01
46	11.00	1.01	0.01
47	11.00	1.01	0.01
48	11.00	1.01	0.01
49	11.00	1.01	0.01
50	11.00	1.01	0.01
51	11.00	1.01	0.01
52	11.00	1.01	0.01
53	11.00	1.01	0.01
54	11.00	1.01	0.01
55	11.00	1.01	0.01
56	11.00	1.01	0.01
57	11.00	1.01	0.01
58	11.00	1.01	0.01
59	11.00	1.01	0.01
60	11.00	1.01	0.01
61	11.00	1.01	0.01
62	11.00	1.01	0.01
63	11.00	1.01	0.01
64	11.00	1.01	0.01
65	11.00	1.01	0.01
66	11.00	1.01	0.01
67	11.00	1.01	0.01
68	11.00	1.01	0.01
69	11.00	1.01	0.01
70	11.00	1.01	0.01
71	11.00	1.01	0.01
72	11.00	1.01	0.01
73	11.00	1.01	0.01
74	11.00	1.01	0.01
75	11.00	1.01	0.01
76	11.00	1.01	0.01
77	11.00	1.01	0.01
78	11.00	1.01	0.01
79	11.00	1.01	0.01
80	11.00	1.01	0.01
81	11.00	1.01	0.01
82	11.00	1.01	0.01
83	11.00	1.01	0.01
84	11.00	1.01	0.01
85	11.00	1.01	0.01
86	11.00	1.01	0.01
87	11.00	1.01	0.01
88	11.00	1.01	0.01
89	11.00	1.01	0.01
90	11.00	1.01	0.01
91	11.00	1.01	0.01
92	11.00	1.01	0.01
93	11.00	1.01	0.01
94	11.00	1.01	0.01
95	11.00	1.01	0.01
96	11.00	1.01	0.01
97	11.00	1.01	0.01
98	11.00	1.01	0.01
99	11.00	1.01	0.01
100	11.00	1.01	0.01

